

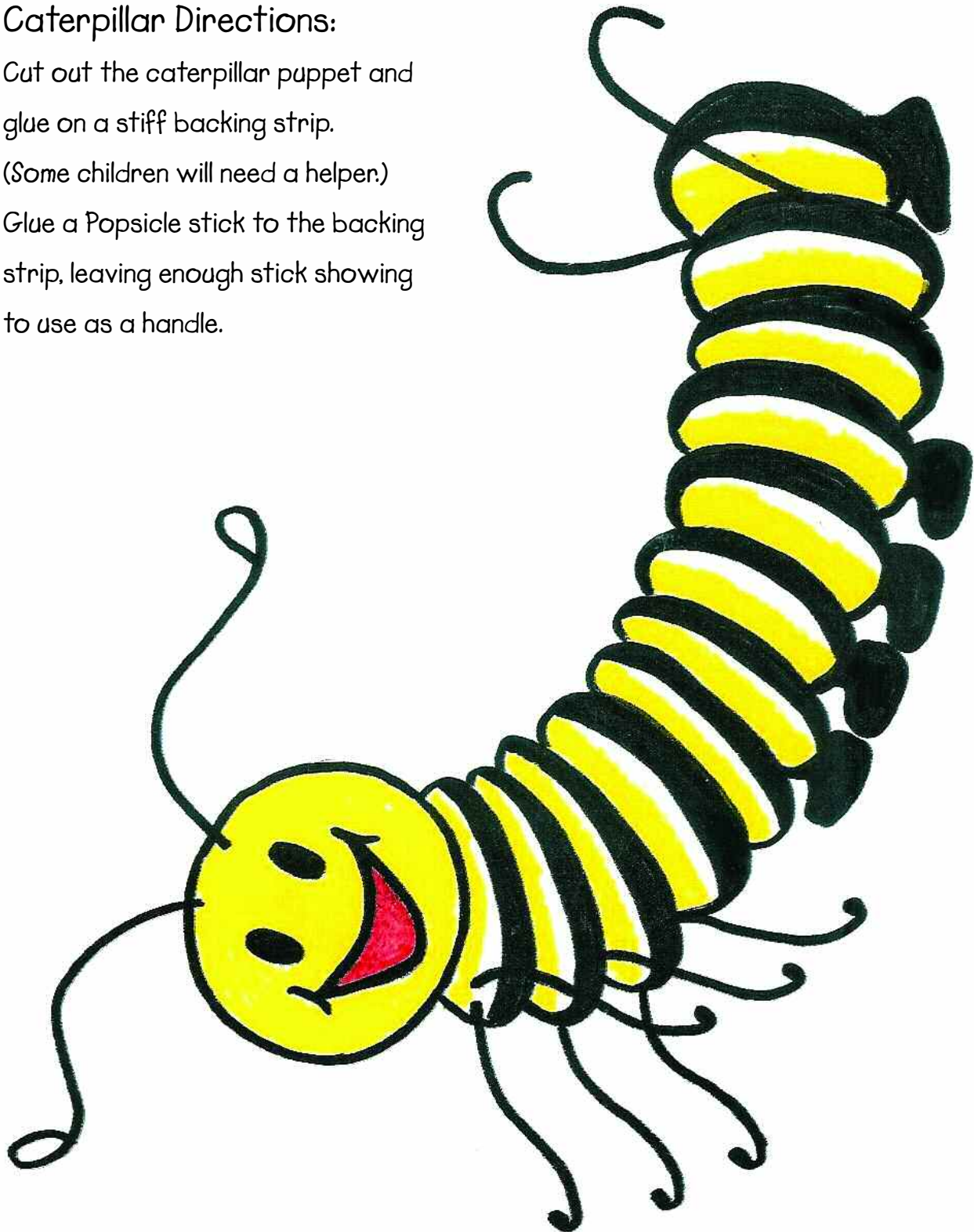
Puppet cut out to use with song, Wile Away the Hours with Bartholomew and Mazie on Milkweed Lane.

### Caterpillar Directions:

Cut out the caterpillar puppet and glue on a stiff backing strip.

(Some children will need a helper.)

Glue a Popsicle stick to the backing strip, leaving enough stick showing to use as a handle.



Puppet cut out to use with song, *Wile Away the Hours* with Bartholomew and Mazie on Milkweed Lane.

**Butterfly Directions:** Cut out the butterfly puppet and glue on a stiff backing strip. (Some children will need a helper.) Glue a Popsicle stick to the backing strip, leaving enough stick showing to use as a handle. Add the two scent gland spots on the hind wings to make a male butterfly.

